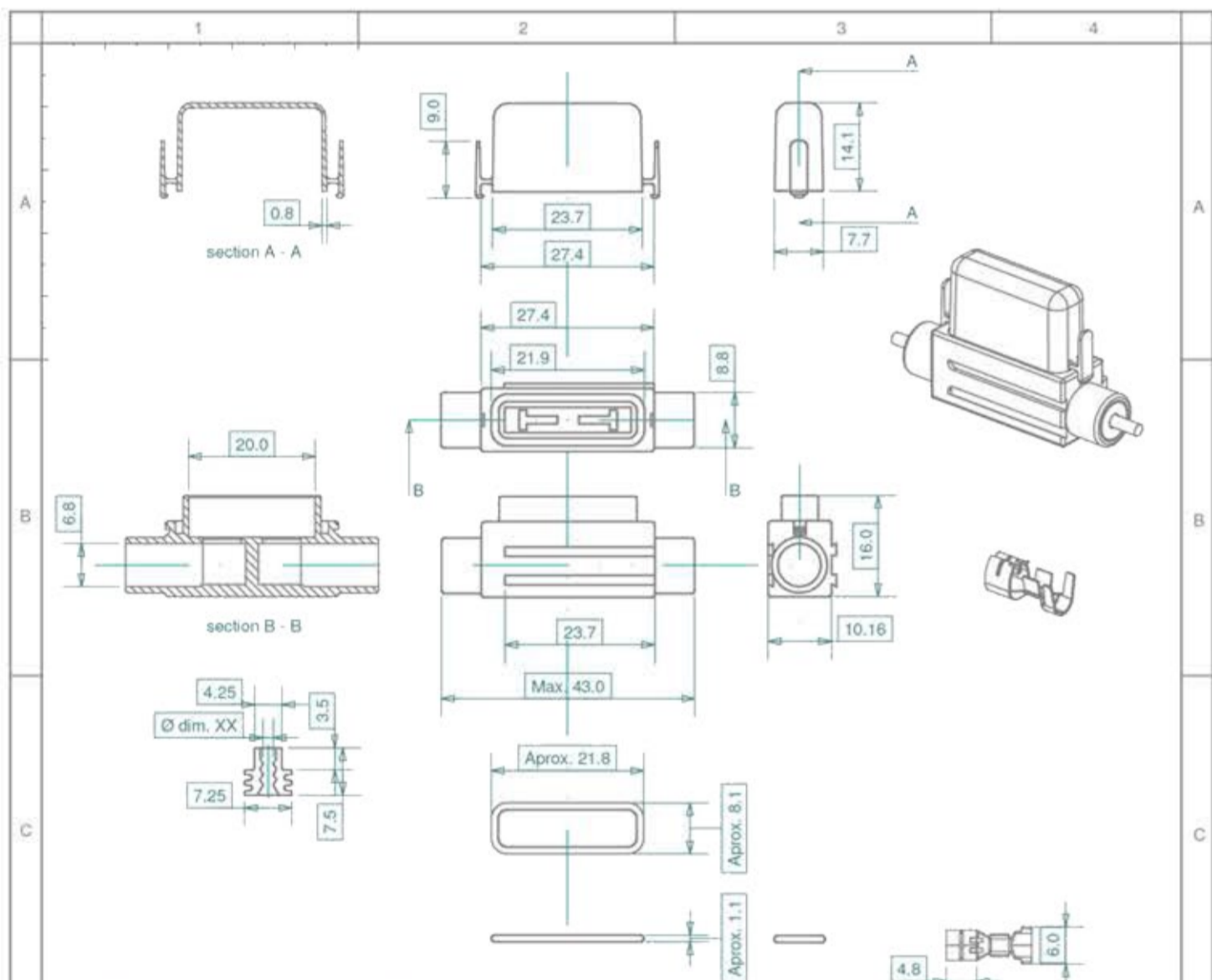
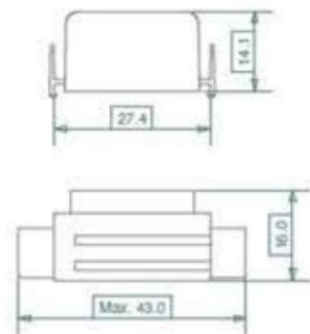


splash waterproof holder series 3200, normOTO fuse

- CuSn fuse receptacles, reeled
- Stackable, to create multi-position holder
- Splash waterproof with cable seals, O-ring and clear cover (IP55)
- Horizontal insertion of fuse receptacles
- Mounting brackets optional



EML	Description
012 3203 00	body PA6 GF30 dy PA6 GF30
012 3202 00	cover clear PC
012 3205 00	silicone O-ring for use with cover
012 3204 00	mounting bracket Left
012 3204 00	mounting bracket Right
011 3201 00	contact, reeled bronze sn-plated 1.0-2.5mm ²
012 VD50 00	cable seal, green, cable diam. 2.0-2.8mm
012 GR15 00	cable seal, gray, cable diam. 2.8-3.5mm
012 VI20 00	cable seal, violet, cable diam. 1.6-2.0mm



ref.	Description	Material	Note
012 3203 00	single holder	PA 6	black
012 3202 00	clear cover	PC	transparent
012 3205 00	O - ring	Silicone	black
012 3204 00	mounting bracket	PA 6	black
011 3201 00	contact 1.0-2.5mm ²	brass sn-plated	reeled
012 VI20 00	cable seal, violet	LSR, 50 shore	HD 6.8mm, ø1.6-2.0mm
012 VD50 00	cable seal, green	LSR, 50 shore	HD 6.8mm, ø2.0-2.8mm
012 GR15 00	cable seal, gray	LSR, 50 shore	HD 6.8mm, ø2.8-3.5mm

Notes: fuse holder suited for normOTO blade fuse up to 30A.
Contact suitable for wire diameters 1.0 - 2.5mm²



3200 series, normOTO blade holder

schematic

3200 drawing 1

1 of 1

012 4 6789 11 Sheet 01